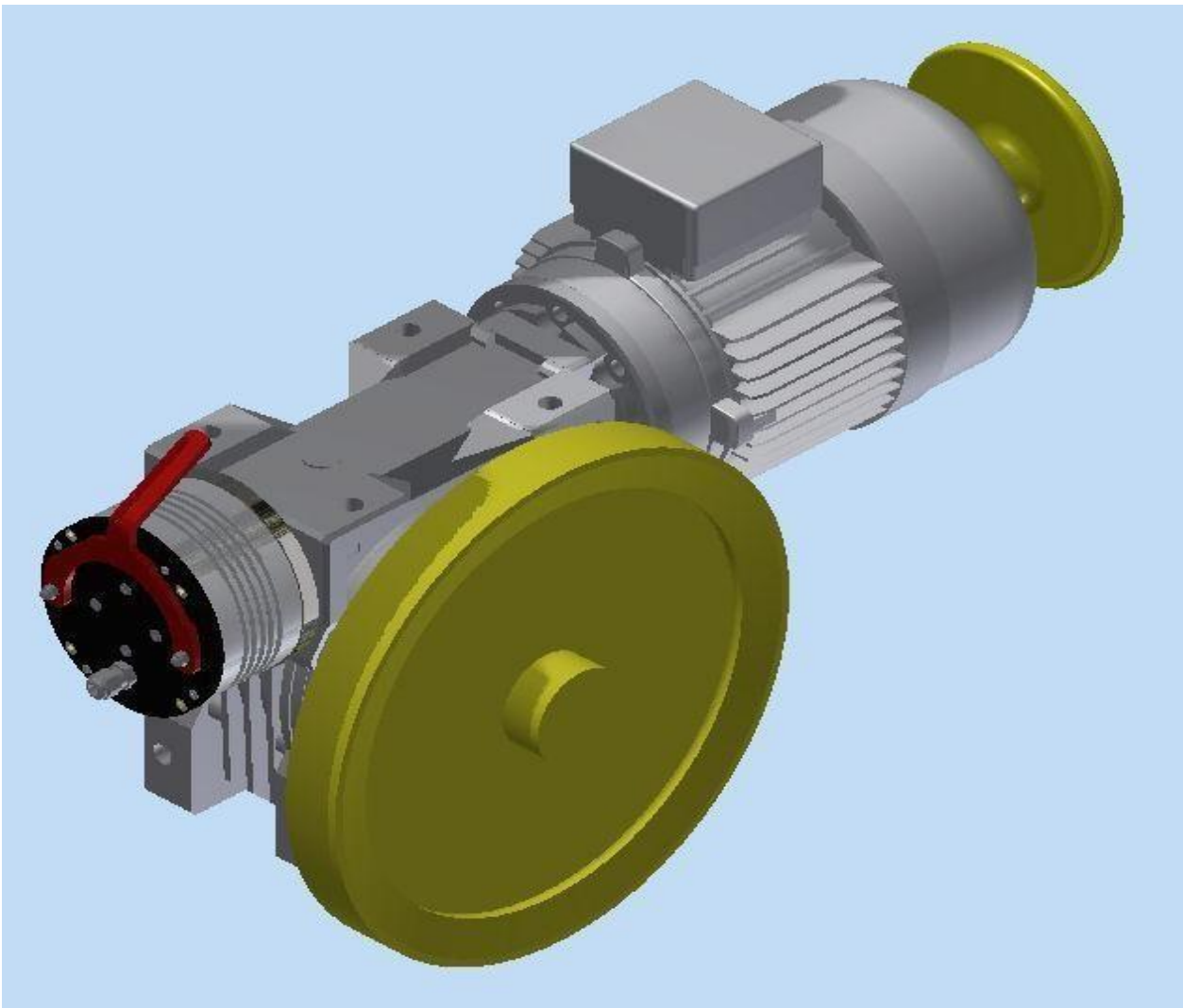


Use and maintenance manual

DUMBWAITER WINCH

Models: RF300 – RF500 – RF800

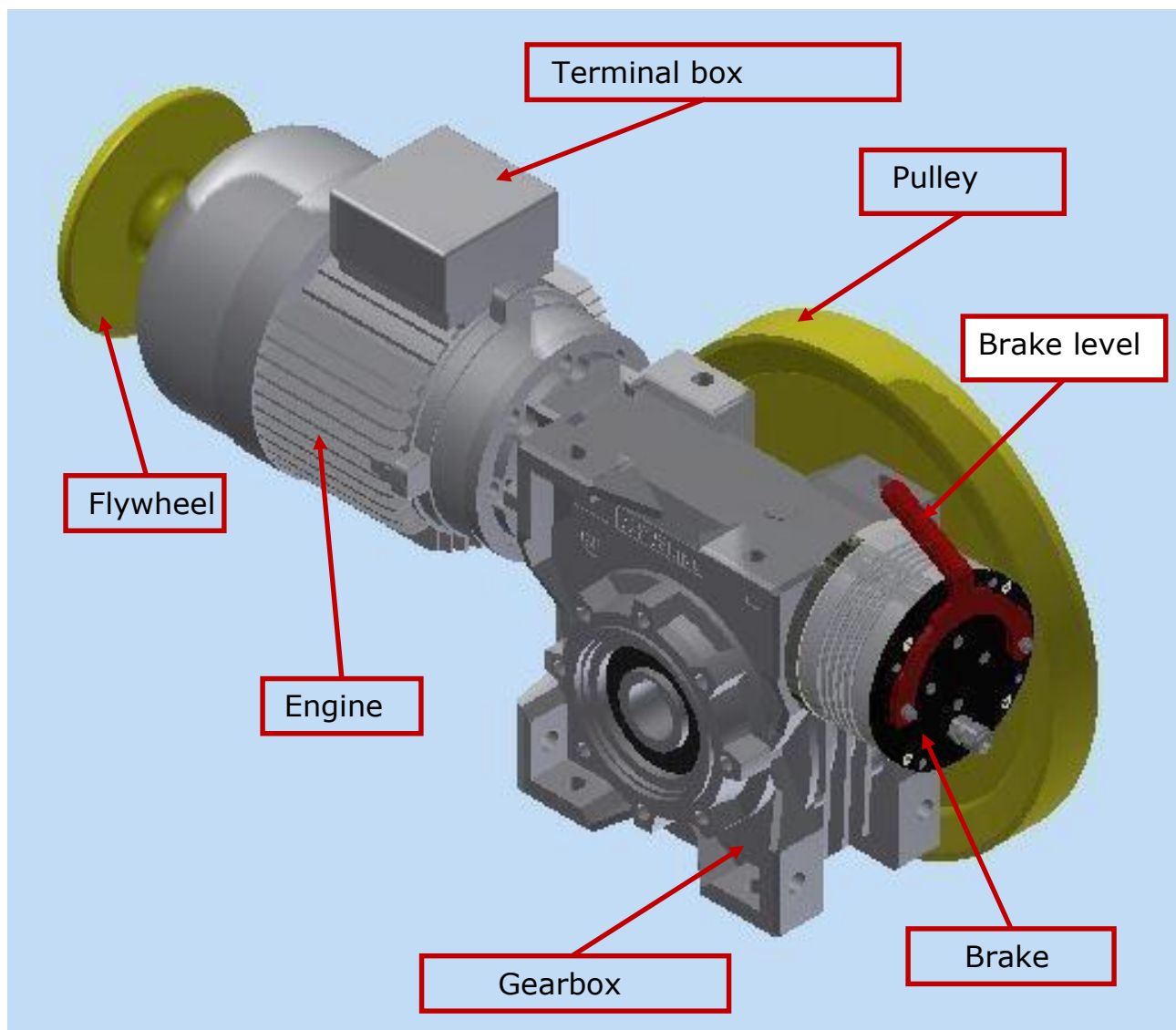


Tecno3 srl Lavorazioni Meccaniche

Via dei Marmorari n. 62 41057 Spilamberto (Mo) Italy

Tel: +39 059781609 E-mail: info@tecno3srl.net web: www.tecno3srl.net

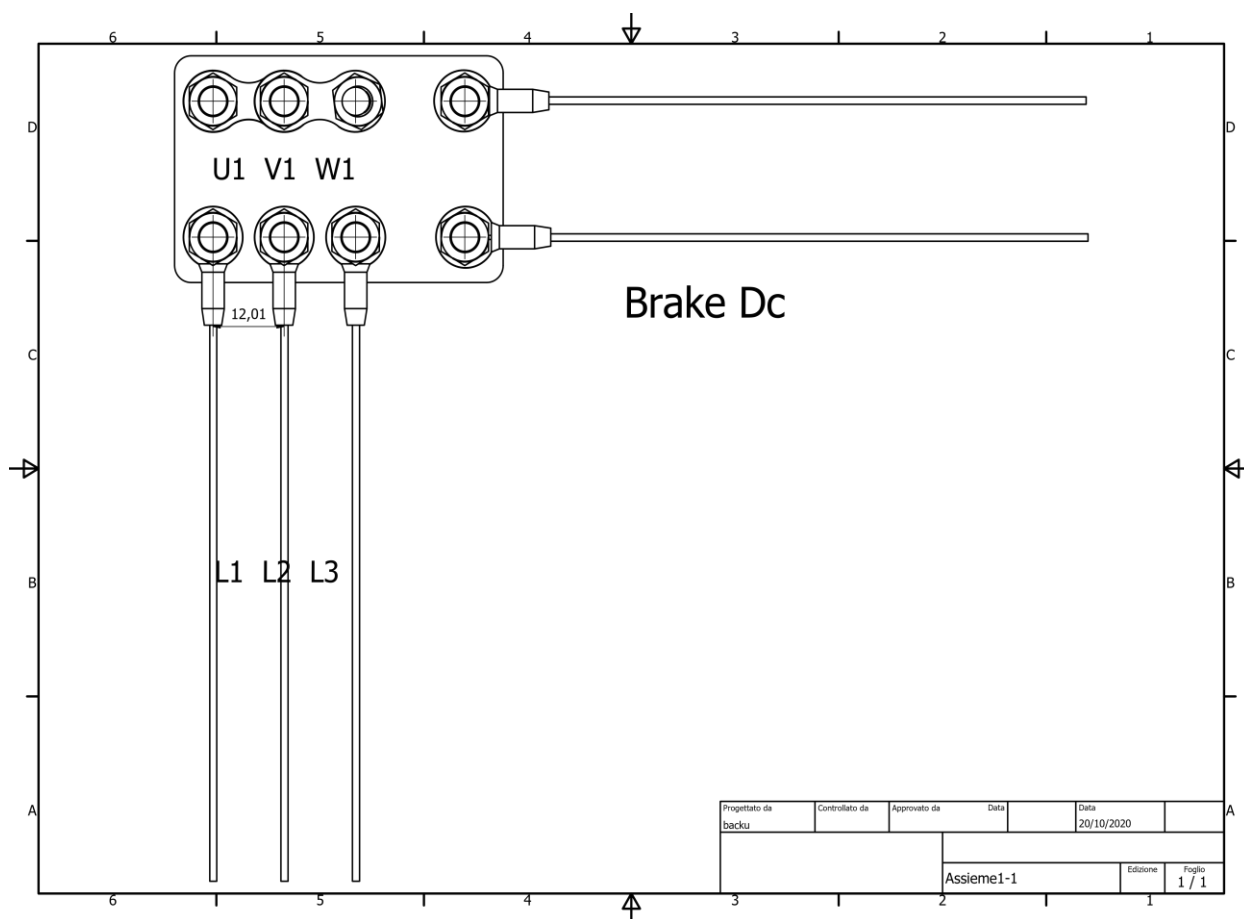
Note: the descriptions and the pictures provided in the present manual are not binding; Tecno3 srl Lavorazioni Meccaniche reserves the right to modify them as necessary at any time and without prior notice.



Electrical connections

In the standard execution the parking disk brake is powered by 220/240 V DC.

The 3-phase asynchronous electric motor is powered by 380/400 V AC at 50 Hz o 60 Hz (depending on the model).



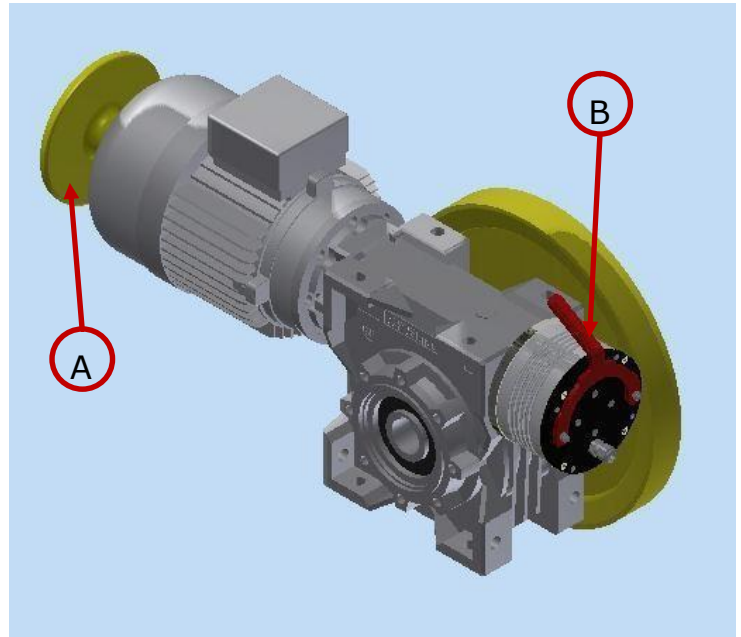
Hand operation of the brake in case of

emergency

– AUTHORIZED PERSONNEL
ONLY –

Perform the following
operations in the given
order:

- 1) Turn off the main switch in the equipment room.
- 2) Firmly hold the crankshaft using the flywheel (A)
- 3) Apply the brake level (B); the crankshaft must turn freely. Move the crankshaft (A) in the most suitable direction until the cab reaches the required position, i.e. until it lines up with the reference mark on the steel ropes (if any).
- 4) Release the brake lever (B).



ATTENTION: springs must be always under load; never release them in order to facilitate the manual handling.

Lubrication

The winch models RF300, RF500 and RF800 are equipped with permanent lubrication.

Braking adjustment

The adjustment requires that the installation is not fixed with ropes. If the installation is shut down and the solenoid is de-energized, loose the two bolts (1) and slightly unscrew the screws (4) (4x, see picture) that fix the coil body (2) to the brake body (3).

Screw or unscrew the screws (5) (4x, see picture) in order to increase or decrease the stroke and obtain the required braking force. Use a feeler gauge to measure the distance (4 measuring points at least) between the flat face of the brake body (3) and the coil body (2).

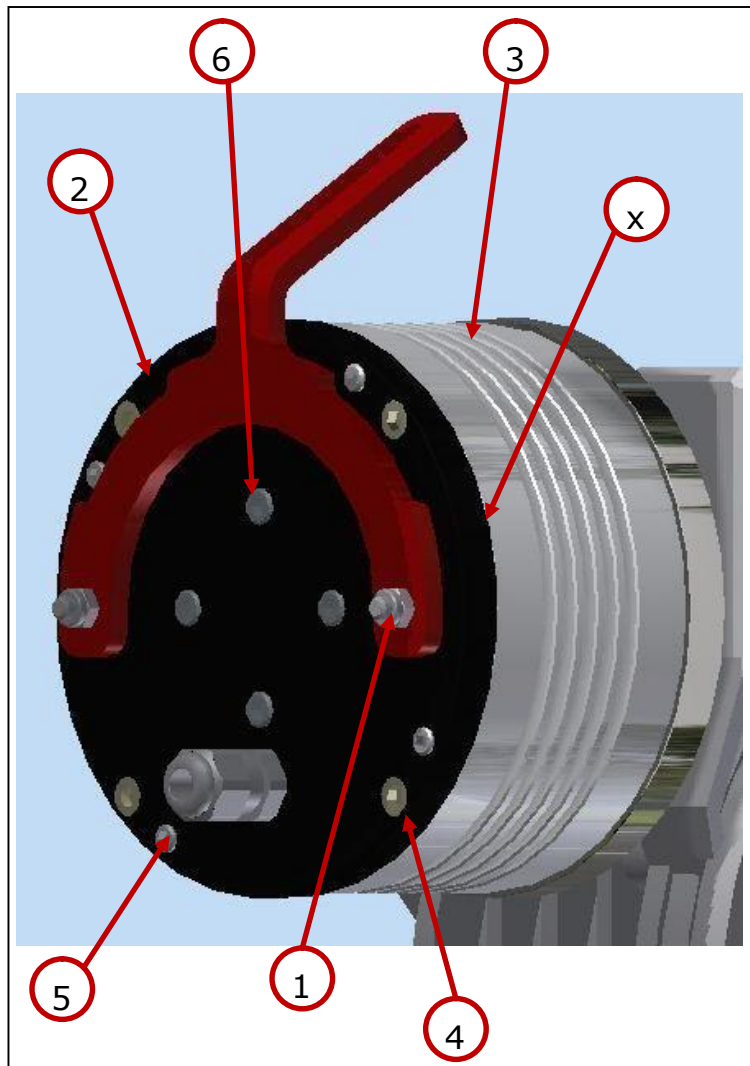
The solenoid has a default stroke of 0,5 mm.

Tighten the screws (4) and screw the bolts (1) until they line up with the lever (with little clearance).

Correct the pre-load of the springs in the coil body as appropriate, in order to adjust the braking intensity. Adjust the screws (6) (4x) to increase or decrease the compression of the springs, in order to get the required braking force.

The material of the brake disc can wear out over time, especially in case of wrong adjustment. This can result in a less effective braking performance due to the reduction of the pre-load of the springs.

It is strongly recommended that you follow the whole above-mentioned adjustment procedure (the pre-load adjustment of the springs is not enough).



Instructions for changing the position/direction



1. Unscrew the bolt of the turning shaft
2. Remove the turning shaft



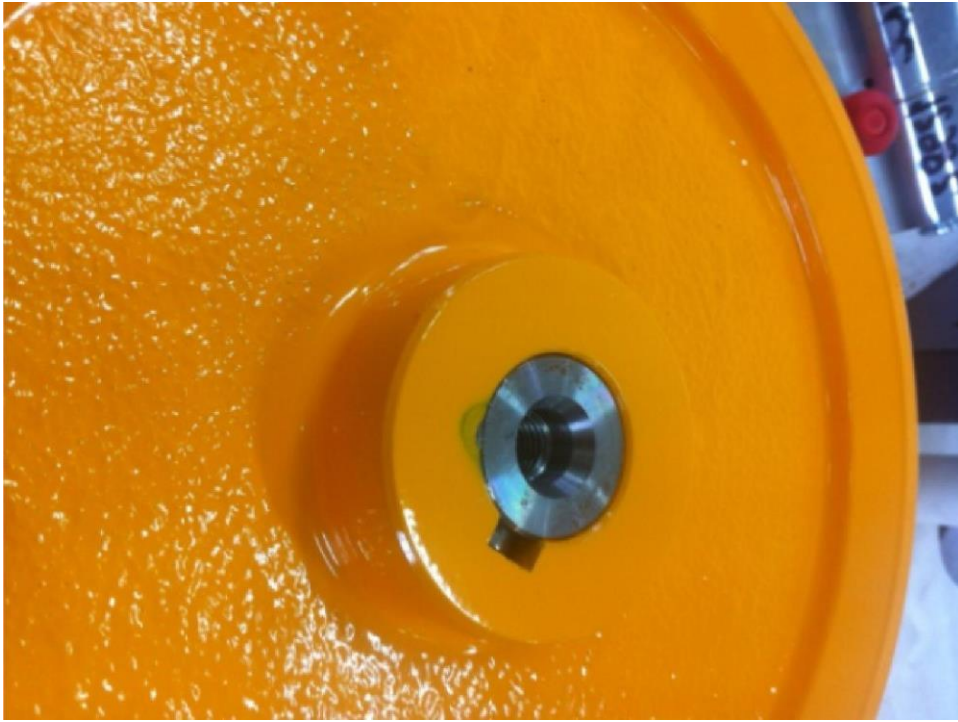
3. Insert the turning shaft on the required side and tighten the previously removed bolt

Pulley assembly

1. Disassemble the turning shaft following the previous procedure



2. Insert the conical part of the shaft into the pulley
3. Tap gently with a soft-faced hammer



4. Fix the bolt as shown in the picture



5. Re-insert the shaft with the pulley into the gearbox, on the required side

Warnings

Replacement parts are available; please provide Tecno3 srl Lavorazioni Meccaniche with the following information:

- 1) winch model
- 2) serial number S/N (you can find it on the label plate of the winch)

Declaration of conformity

- Dichiarazione conforme all'Allegato II-B, ai sensi della "Direttiva Macchina" 2006/42/CE e successive modificazioni.

"La Tecno3 srl Lavorazioni Meccaniche, situata in Via dei Marmorari n.62 41057 Spilamberto (Mo) Italia, è costruttrice dell'organo destinato esclusivamente all'impiego in montavivande/montacarichi non destinato al trasporto di persone, cui si accompagna la seguente dichiarazione:

i prodotti, essendo destinati ad essere incorporati in un insieme complesso, non possono essere messi in servizio finché tutto l'insieme complesso non sia stato dichiarato conforme".

- EC Declaration of conformity in accordance with Machinery Directive 2006/42/EC, Annex II (including later amendments)

"Tecno3 srl Lavorazioni Meccaniche, located in Via dei Marmorari n. 62 41057 Spilamberto (Mo) Italy, is the manufacturer of the above mentioned gear that is intended exclusively for the use in dumbwaiters and is non designed to transport people. The winch is accompanied by the following declaration:

as the product is part of an assembly, it must not be put into service until the final machinery into which it is to be incorporated has been declared in conformity with the provisions of the Machinery Directive".

Property

This document and the gear it describes are exclusively owned by Tecno3 srl Lavorazioni Meccaniche